

# Agenda Item 4 - General Manager's Report

## May 15, 2024



# General Manager's Report

- Contracts/Amendments over \$100K
- Ridership Update
- Construction Update
- New Initiatives
  - Santa Rosa Rose-E Trolley
  - River Shuttle Partnership
  - SMART Connect Larkspur
- FTA Triennial Review
- Questions

# Contract/Procurements over \$100K

AMENDMENTS / CHANGE ORDERS					
CONTRACT # / PO #	COMPANY NAME	ACTION	DESCRIPTION	AMOUNT INCREASED	NEW CONTRACT AMOUNT
OP-PS-21-001	Holland L.P.	Amendment No. 1	Testing and Measuring of Track Geometry, Track Strength, and Rail Profile	\$33,500.00	\$113,500.00

- Awarded PO SMT001419 to Wiskerchen Truck & Equipment
- Purchase of (1) Hi-Rail 1-Ton Track Inspector Truck
- Wiskerchen Truck & Equipment won bid for this line item under Solicitation No. OP-EQ-24-002.
- Total purchase price of \$132,617.00



# Contract/Procurements over \$100K

AMENDMENTS / CHANGE ORDERS					
CONTRACT # / PO #	COMPANY NAME	ACTION	DESCRIPTION	AMOUNT INCREASED	NEW CONTRACT AMOUNT
OP-PS-21-001	Holland L.P.	Amendment No. 1	Testing and Measuring of Track Geometry, Track Strength, and Rail Profile	\$33,500.00	\$113,500.00

- Amendment No. 1 to Agreement No. OP-PS-21-001 with Holland L.P
- Agreement provides for the testing and measuring of track geometry, track strength, and rail profile.
- Amendment No. 1 extends term for an additional year utilizing an available option
- Increases the not-to-exceed amount by \$33,500 for a new total not-to-exceed amount of \$113,500.



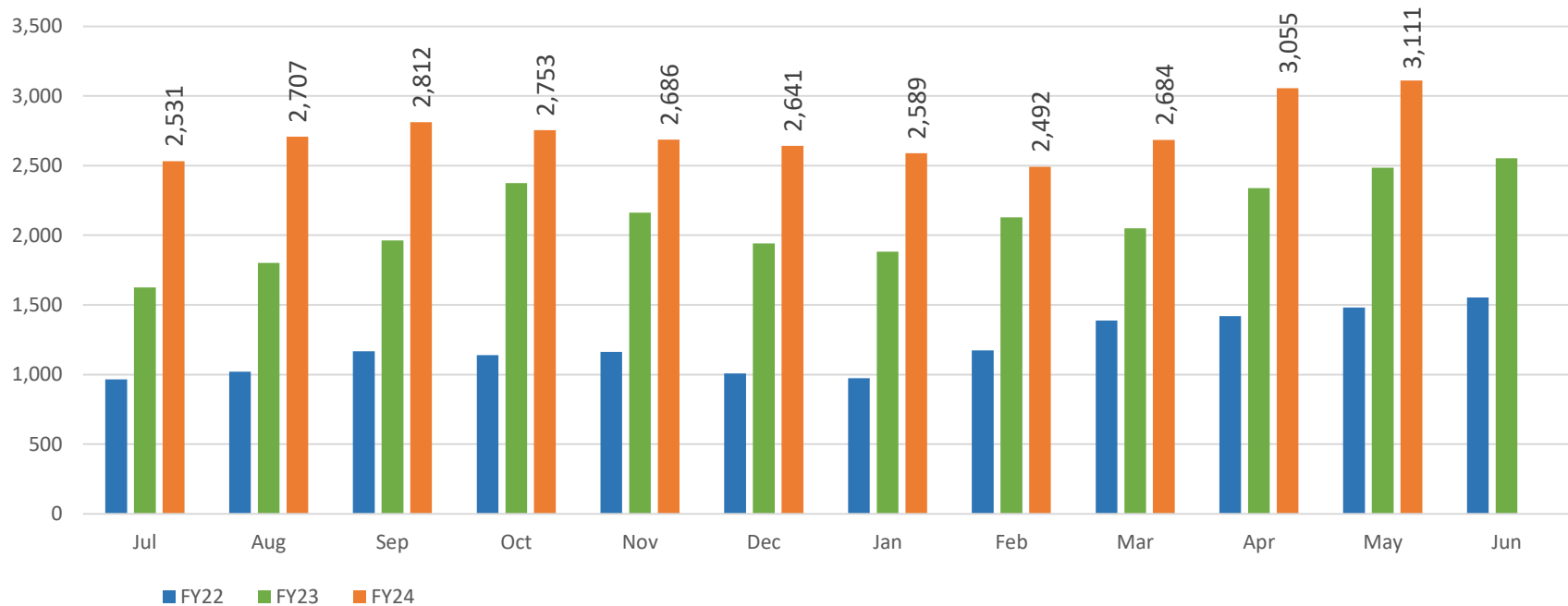
# Average Weekday Ridership

April Avg Weekday ridership: 3,055

- 31% over April 2023
- 26% over April 2019 (pre-COVID)

May Avg Weekday ridership to date: 3,111

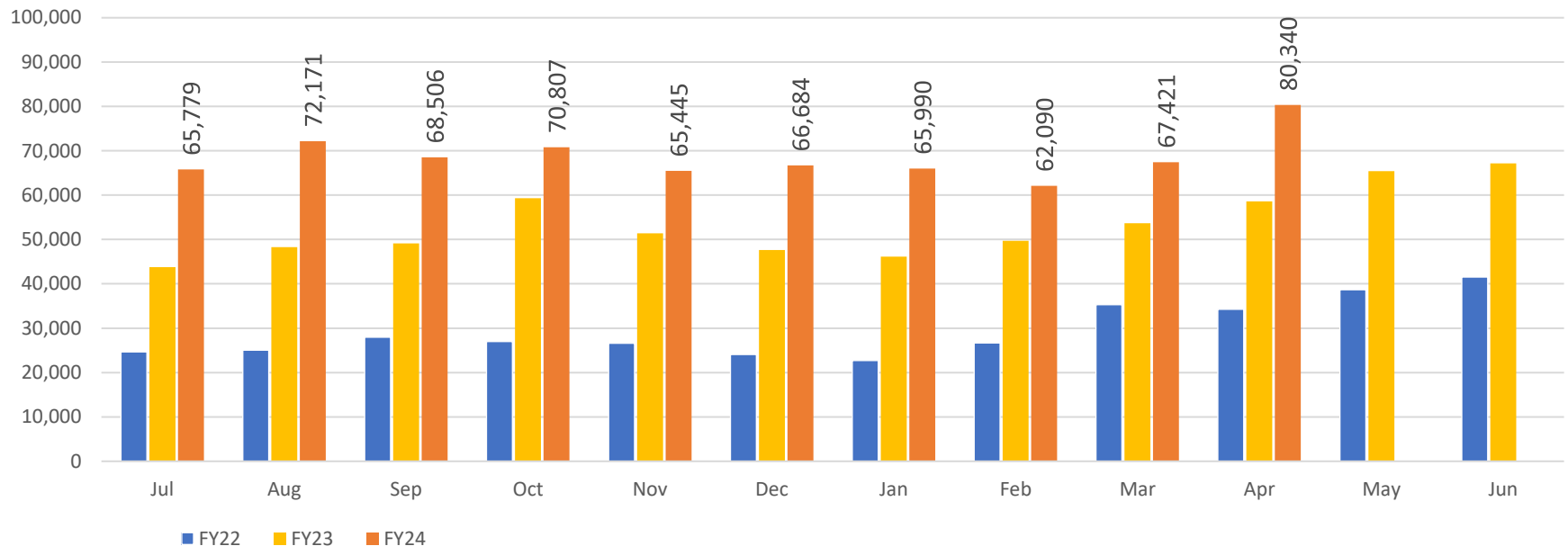
- 25% over May 2023
- 23% over May 2019 (pre-COVID)



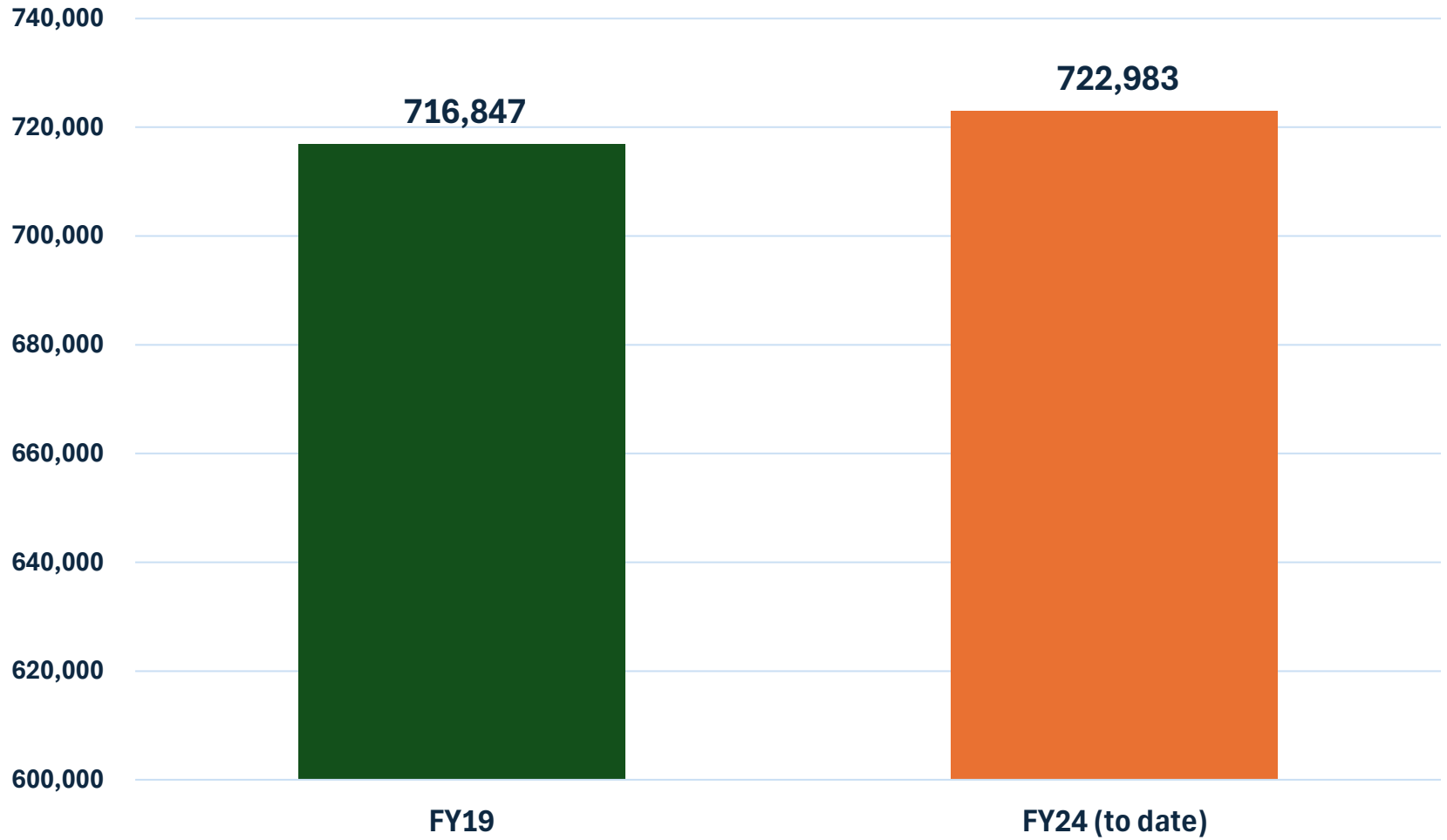
# Monthly Ridership

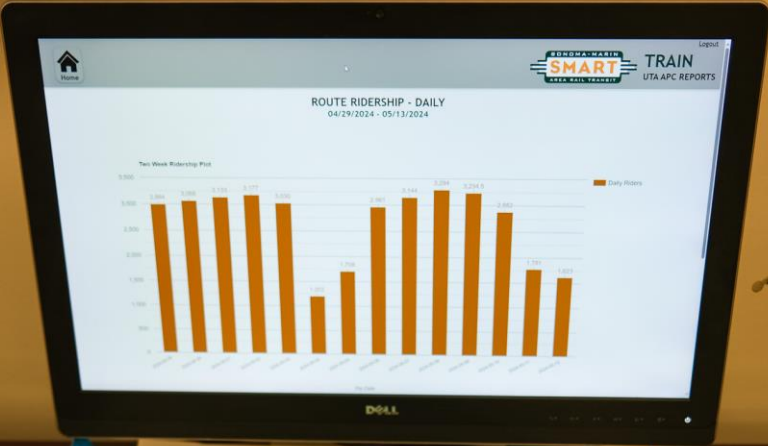
April Ridership = 80,340

- 37% over April 2023
- 33% over April 2019 (pre-COVID)
- 8% higher than the previous all-time monthly record
- FY-to-date ridership tracking 8% over the year pre-COVID



# Annual Ridership

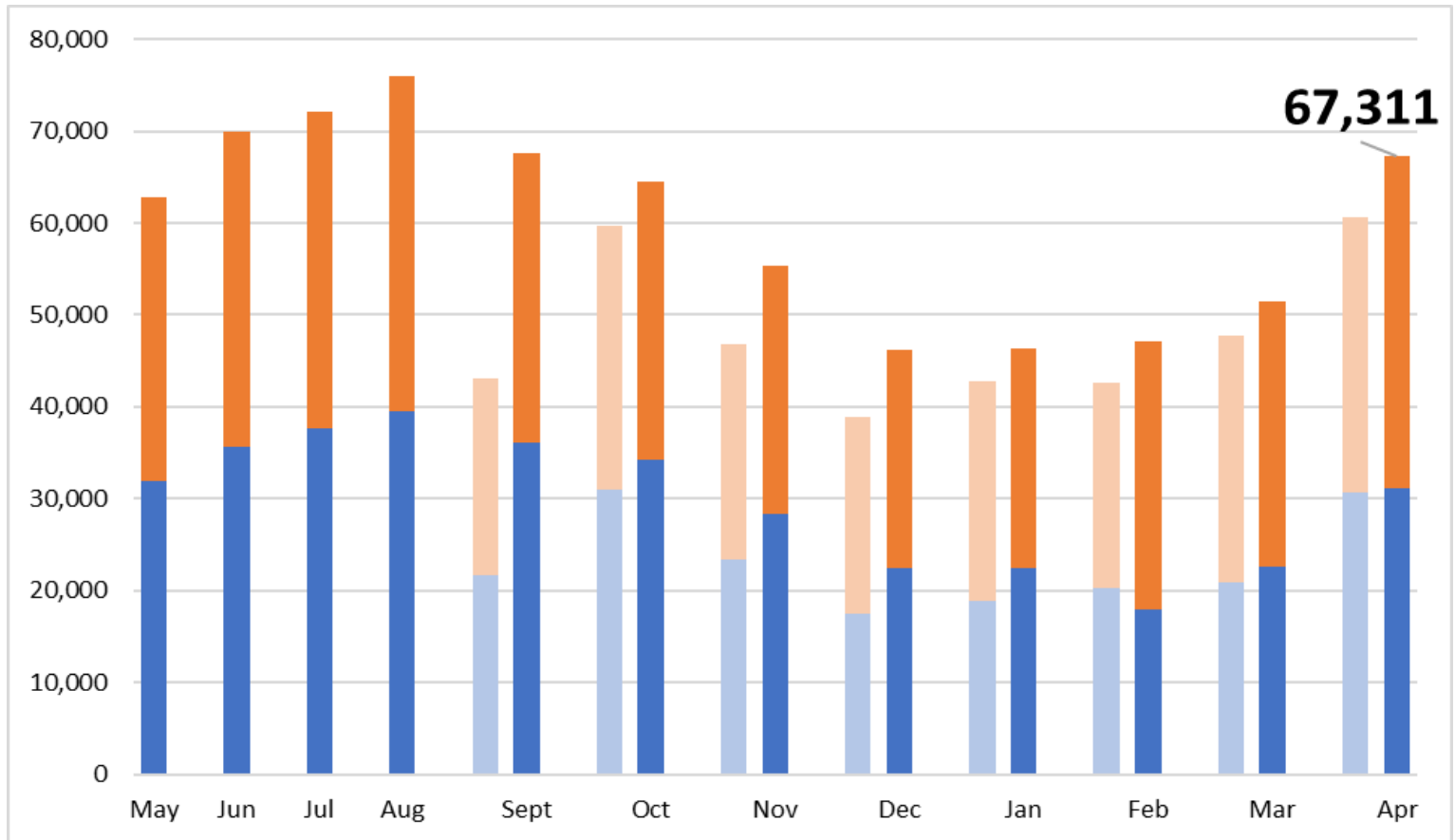






# Pathway Counts

## September 2022 – April 2024



■ Bicyclists (prior year)   
 ■ Pedestrians (prior year)   
 ■ Bicyclists   
 ■ Pedestrians



# New Pathway Counter in San Rafael

- SMART Maintenance of Way installed SMART's 10<sup>th</sup> Counter
- Located in San Rafael, on Caltrans Right of Way along the Lincoln Hill Pathway
- Counts from this location are included in April's total Pathway Counts





# McDowell Boulevard – installing traffic signal conduits



# Petaluma North Station – placing concrete for the Platform Walls





# Windsor Extension –Installing support piles for undercrossing





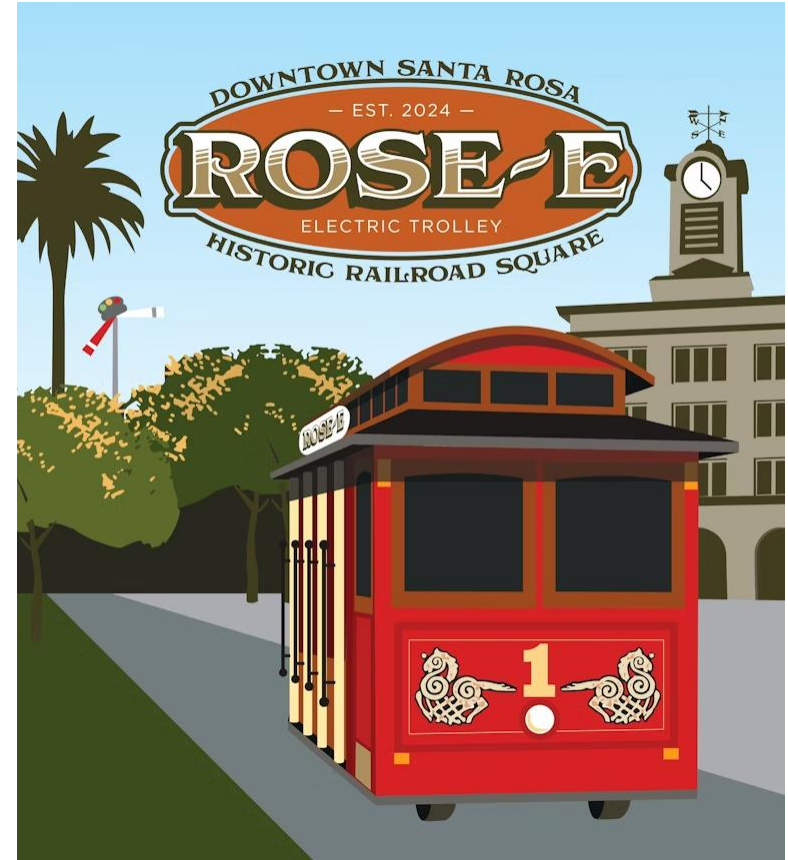
## Windsor Extension –Installing right-of-way fencing





# Santa Rosa Rose-E Trolley

- Santa Rosa Downtown District is launching a trolley connecting Railroad Square and the Downtown District
- SMART is a sponsor, along with Sonoma Clean Power, City of Santa Rosa, and Visit Santa Rosa
- Trolley is electric and ADA accessible; rides are fare free
- Program runs May 15 to Sept 29
- Weds, Thurs, Friday: 5-9pm  
Saturday: 1-4pm, 5-9pm  
Sunday: 11am-3pm



# River Shuttle Partnership

- Sonoma County Regional Parks runs a summer weekend shuttle to the Russian River
- Shuttle stops just west of SMART Connect Weekend Shuttle zone
- SMART & Regional Parks partnering to offer a shuttle connection for SMART riders to the river
- SMART Connect will offer one direct ride to Steelhead beach in the morning and one pickup from the Shuttle site in the afternoon
- Project is supporting transit access to our Regional Parks





# SMART Connect Larkspur

- Launching shuttle connection to the Larkspur Ferry Terminal in June
  - Soft launch – early June
  - June 20<sup>th</sup> – Ribbon-Cutting Celebration
- Service Days: Thursday – Sunday
- Meets every train and ferry within 5 minutes
- Weekday: 7:00am – 6:00pm
  - Serves Larkspur Landing on demand
- Weekend: 8:30am – 7:30pm
  - Serves Larkspur Landing and Corte Madera malls on demand
- Adult Fares \$1.50, Seniors and Youth Free
- Currently working on partnership with TAM and GGBHTD



# FTA's Triennial Review

- Examines performance and adherence to FTA requirements and policies
- Mandated by Congress in 1982 for those recipients of Urbanized Area Formula Program funds
- Occurs every three years

# FTA's Triennial Review

Examines 23 areas of responsibility:

- Legal
- Financial management and capacity
- Technical capacity – Award management
- Technical capacity – Project management
- Transit asset management
- Satisfactory continuing control
- Maintenance
- Procurement
- Disadvantaged business enterprise
- Title VI
- Americans with Disabilities Act – General
- Equal Employment Opportunity
- Drug-Free Workplace Act
- Drug and Alcohol Program
- Section 5307 program requirements
- Cybersecurity

# FTA's Triennial Review

- SMART's first time as direct federal fund recipient
- Responded to 238 questions in writing and provided 805 documents
- Timeline
  - December 20, 2023 - Information requested
  - February 29, 2024 – All documents were due
  - April 22 and 23, 2024 – In person review
  - May 9, 2024 – Exit conference

# FTA's Triennial Review

- Results
  - 1 deficiency identified
    - Need to write procedure
    - Need to implement procedure
- Complimented On:
  - Procurement – No questions or deficiencies – Model process
  - Organization and responsiveness
- Next Steps
  - Draft report will be sent to SMART around June 10, 2024, for review
  - Final report will be received by SMART on or before July 16, 2024
  - Have 90 days from final report to resolve deficiency

# Questions?

# Connect with us:

[www.SonomaMarinTrain.org](http://www.SonomaMarinTrain.org)



## Customer Service:

[CustomerService@SonomaMarinTrain.org](mailto:CustomerService@SonomaMarinTrain.org)

(707) 794- 3330

