

Agenda Item 9: California Tiger Salamander Mitigation

June 21, 2023

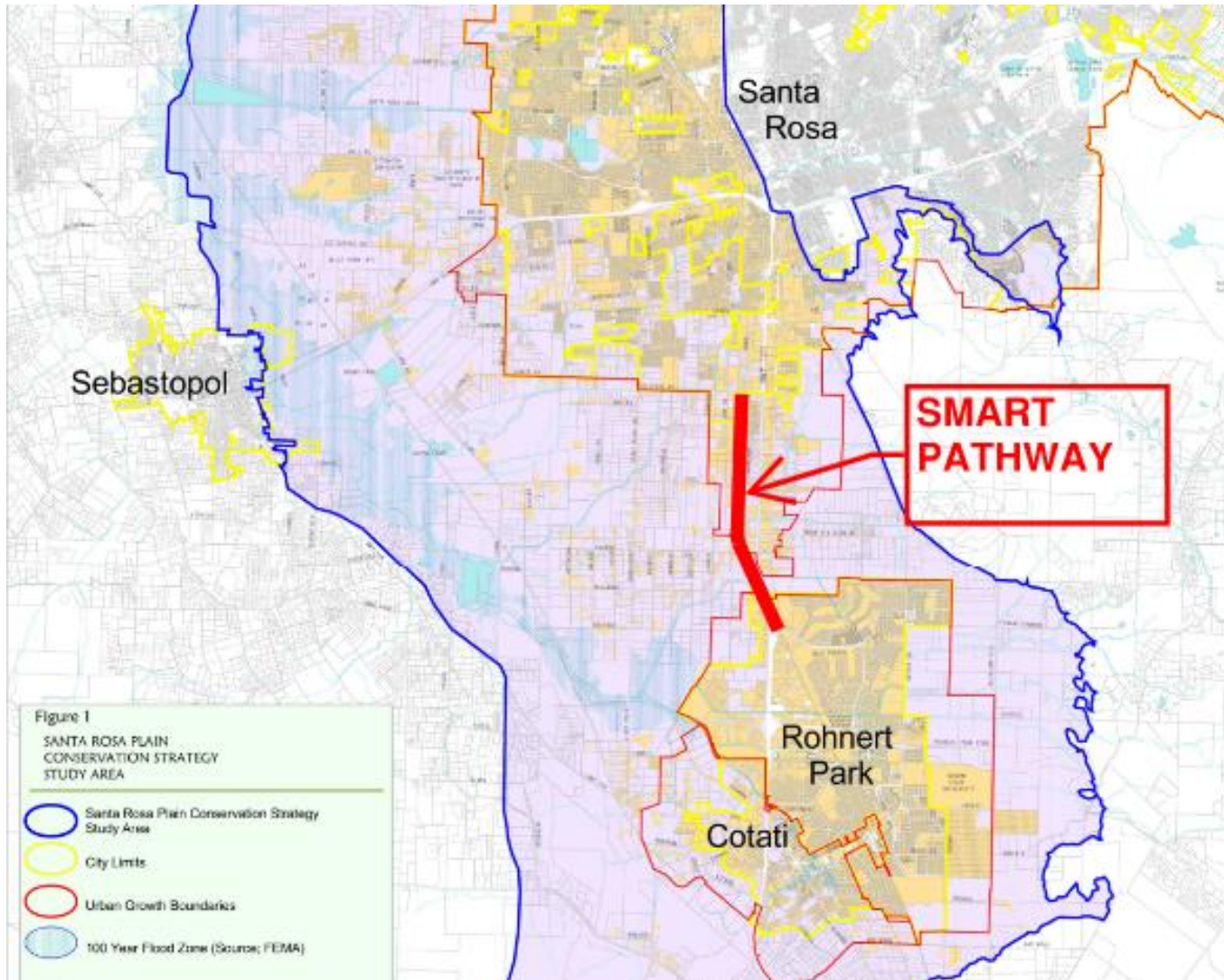


SMART Pathway: Golf Course Dr. to Bellevue Ave.



- Passes through the Santa Rosa Plain within the Laguna De Santa Rosa Watershed
- US Fish & Wildlife: Established Santa Rosa Plain Conservation Strategy
- Protect Endangered Plants and Species

California Tiger Salamander Habitat



California Tiger Salamander Mitigation

- The Santa Rosa plain is recognized as critical habitat for the California Tiger Salamander (CTS)
- U.S. Fish & Wildlife Services (USFWS)
- California Department of Fish & Wildlife (CDFW)



Meeting Mitigation Requirements

- Construction permits require: purchase 7.04 acres of CTS conservation credits
- SMART completed a competitive bid process for 7.04 acres of Tiger Salamander Conservations Credits
- SMART received 1 bid for the sale of mitigation credits in the amount of \$1,576,960 from the Alton Lane Conservation Preserve, LLC.



Questions?

Connect with us:

www.SonomaMarinTrain.org



Customer Service:

CustomerService@SonomaMarinTrain.org

(707) 794- 3330

